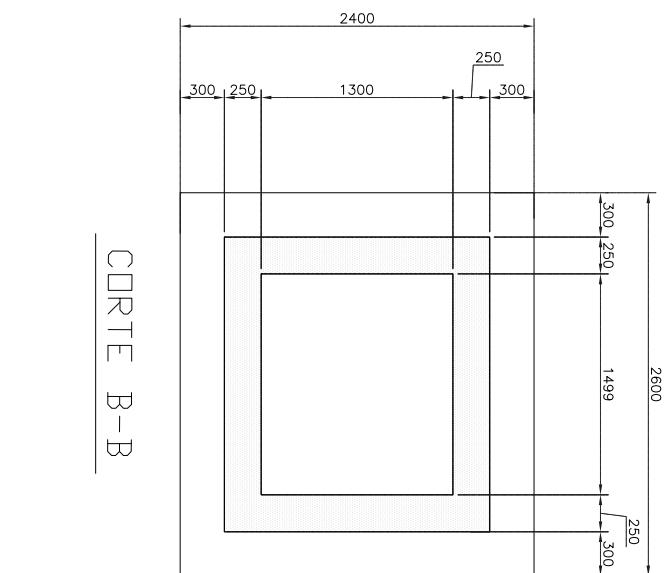
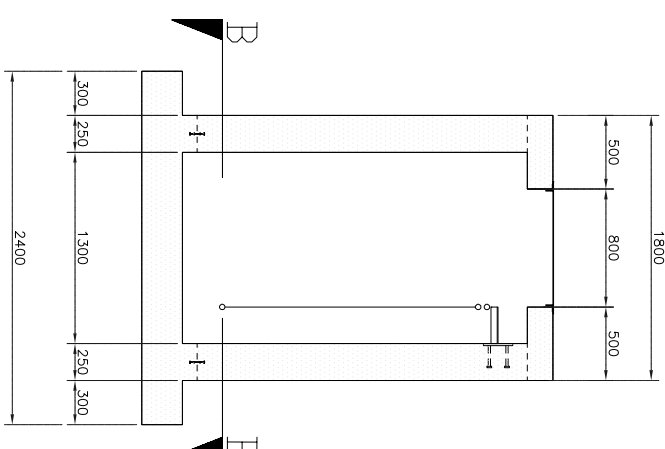


NOTA:

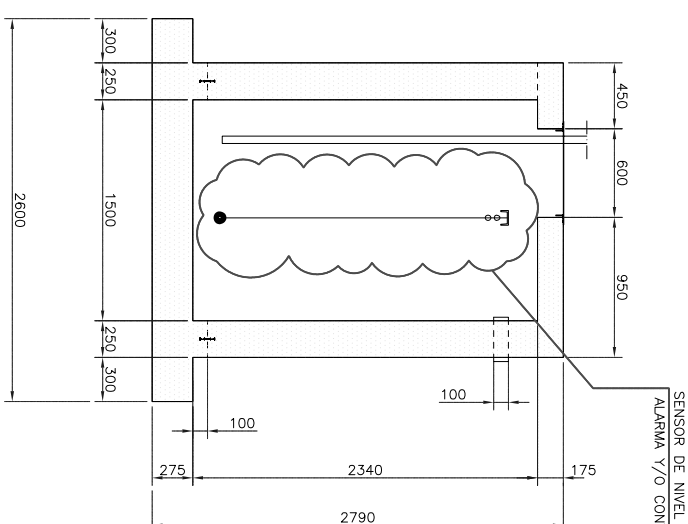
- 1.-Capacidad de 3 M3
- 2.-Fosa impermeabilizada interiormente con revestimiento adecuado para hormigón aplicable con brocha o rodillo.



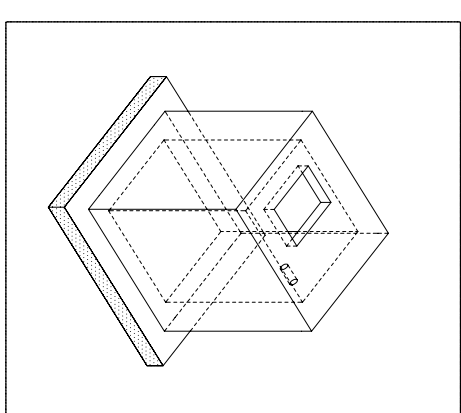
CORTE B-B



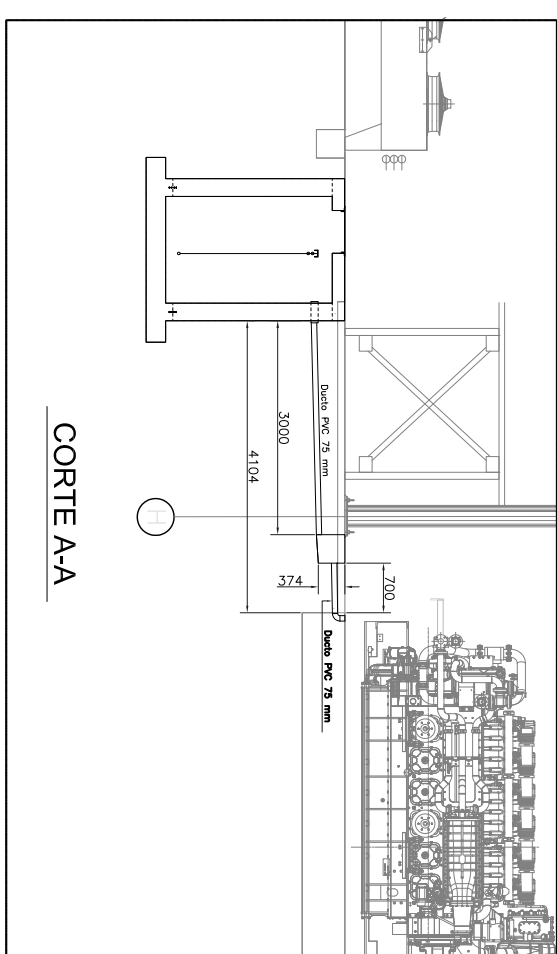
ELEVACION



SENSOR DE NIVEL PARA
ALARMA Y/O CONTROL



ISOMETRIC



CORTE A-A

[illegible]